

 **PRIME**
@ ADIBATLA


PARIJATHA
HOMES & DEVELOPERS PVT. LTD.
The Honest Realtors
An ISO 9001:2005 Company



a project by
PARIJATHA HOMES & DEVELOPERS PVT. LTD

 **APPROVED**
Growing Global
HMDA FILE NO.
039471/20A/R1/UG/HMDA/27092020

PROVIDING INNOVATIVE HOUSING SOLUTIONS

The wisdom behind creating architectural marvels lies with a team that has an exceptional advantage in matters of skill, talent, experience and expertise, Parijatha Homes & Developers Pvt. Ltd. has been blessed with one such team whose tenacious focus is on creating remarkable ventures with excellent elevations and vastu compliant structures at affordable prices.

For the past two decades, each project from Parijatha Homes & Developers Pvt. Ltd. has been an example of their commitment to excellence, timely delivery and more importantly the satisfaction of their clients. The company's proficiency lies in indentifying highly strategic localitons and creating brilliant homes, commercial and functional office spaces using state-of-the art infrastructure and cutting edge technology.

Parijatha Homes & Developers Pvt. Ltd. delivers high-end buildings with affordable price tags. Their eco-friendly methodology and innovative practices has cemented their position amongst the finest in the real estate and constructional business.



A PROJECT THAT OFFERS AN IDEAL SHOPPING EXPERIENCE

Parijatha Prime is an ensemble of luxurious living and commercial spaces. Located at Adibatla, This complex opens new terrains for your residential and business needs.

The magnificent architecture of Parijatha Prime revolutionize your living experience with an intelligent combination of aesthetic design, new age retail spaces, innovative facilities, functional efficiencies and a flawless location. This project offers excellent connectivity and locational advantage to its residents and visitors.

It is a world-class integrated community offering the finest living experience to those who chose exclusivity.



AN APARTMENT ISN'T JUST A HOME IT IS A CELEBRATION OF LIFE

Conceived & designed to create a world-class living habitat, Parijatha Prime at Adibatla is set on a 10-acre of unpolluted land. This stunning apartment complex offers Cellar + Ground + 5 upper floors of 678 luxurious homes.

Set amidst landscaped greens, Parijatha Prime comprises of 9 residential blocks of 2 and 3 bedroom homes, a commercial building and a classy clubhouse that extrude exclusivity.

Indulge in the state-of-the-art amenities provided here.

A contemporary clubhouse, a modern saloon for your grooming needs, a yoga zone, a swimming pool for you to rejuvenate, kid's play areas and a shopping facility for daily necessities.

Parijatha Prime has everything you want for you home accessible locality, world-class amenities, features that ensure the safety and security of your loved ones and above all an outstanding project by a reputed developer.





F

D

C

B

A

Commercial Building

APPEALING LIFESTYLE AMENITIES

Parijatha Prime is a stunning modern architecture with contemporary elevation. This spacious and comfortable residential and commercial complex thoughtfully integrates functionality with modernity.

The efficiency of planning is evident as you step into your home. Each spacious rooms is bathed with abundant natural light and cool breeze. A balcony that overlooks the landscaped greens. High-end specifications, premium sanitary and electrical fitting and fixtures, wide corridors, ample parking space, well-lit common areas, CCTV & 24-hour security service are some of the desirable features that complete and complement Parijatha Prime.





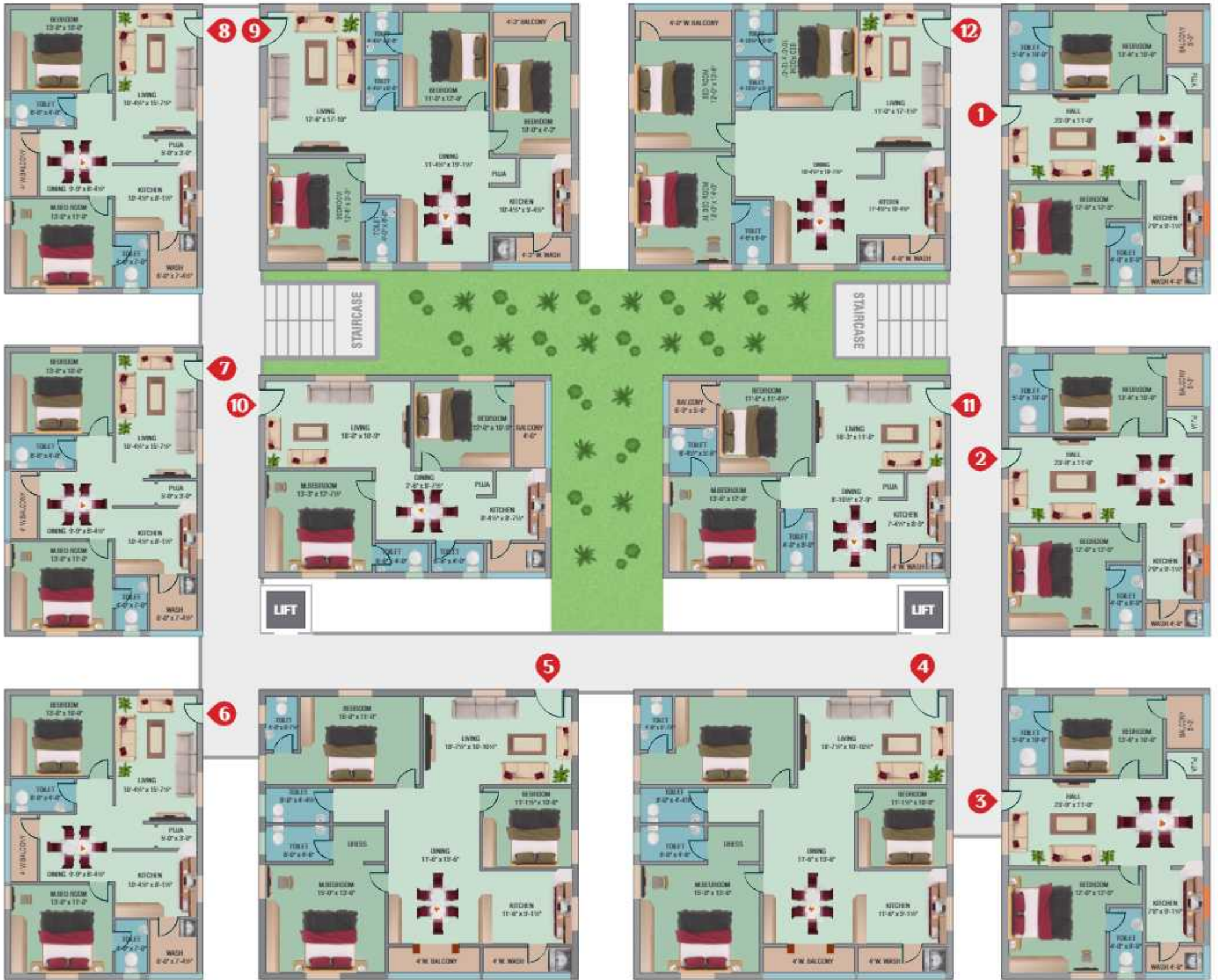
At the
end of the day,
the goals are simple
Safe and Secure

A,B,C,D,E & F
BLOCKS VIEW



A,B,C,D,E & F
BLOCKS VIEW







2 BHK
1140 SFT
WEST FACE
FLAT NO. 1, 2, 3
A, B, C, D, E, F BLOCKS



3 BHK
1800 SFT
NORTH FACE
FLAT NO. 4, 5
A, B, C, D, E, F BLOCKS



2 BHK
1140 SFT
EAST FACE
FLAT NO. 6, 7, 8
A, B, C, D, E, F BLOCKS



3 BHK
1650 SFT
WEST FACE
FLAT NO. 9
A, B, C, D, E, F BLOCKS



2 BHK
1140 SFT
WEST FACE
FLAT NO. 10
A, B, C, D, E, F BLOCKS



2 BHK
1140 SFT
EAST FACE
FLAT NO. 11
A, B, C, D, E, F BLOCKS



3 BHK
1650 SFT
EAST FACE
FLAT NO. 12
A, B, C, D, E, F BLOCKS



CLUB HOUSE FEATURES

- ❑ Swimming Pool
- ❑ Yoga Hall
- ❑ Gym
- ❑ Indoor Games
- ❑ Banquet Hall
- ❑ Children Play Area
- ❑ Super Market
- ❑ Guest Room
- ❑ Salon & Spa
- ❑ Senior Citizen Space

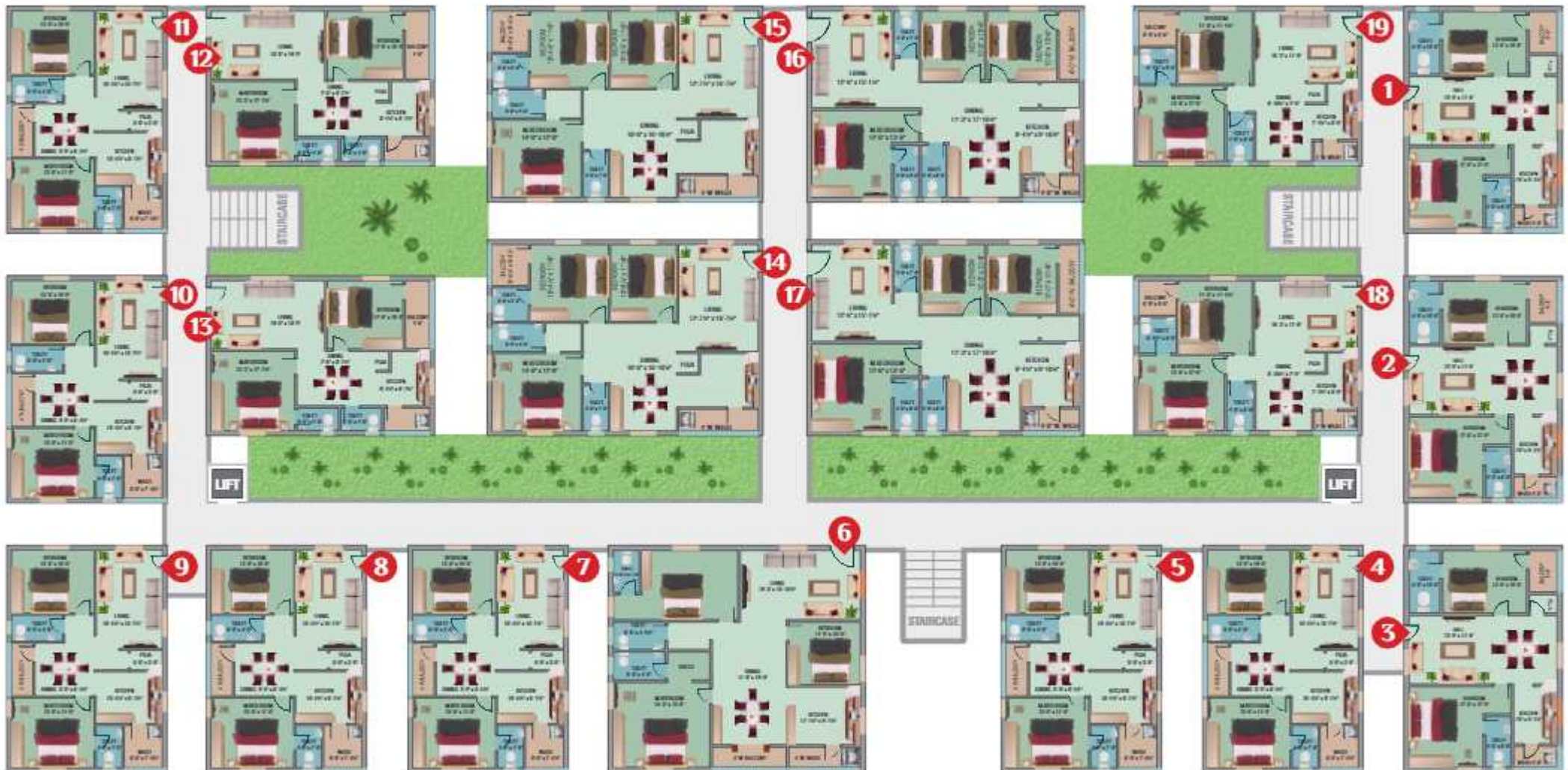
AN AMICABLE & LAVISH LIFESTYLE

The centrally located state-of-the-art clubhouse at Parijatha Prime is aesthetically designed for its residents to unwind, relax and socialize. It will have a wonderful swimming pool, neat pool decks, a spacious multi-purpose hall, a well-equipped gymnasium, many indoor games, a tennis and badminton court, a large billiards table, a yoga deck and much more. The complex will also house a grocery store within the premises so you will never run out of daily essentials. So no matter how you choose to relax and rejuvenate, the top-notch amenities at Parijatha Prime clubhouse is intended to make you every day exciting and exhilarating.



G BLOCK VIEW







2 BHK
1140 SFT
WEST FACE
FLAT NO. 1, 2, 3
G BLOCK



2 BHK
1140 SFT
EAST FACE
FLAT NO. 4, 5, 7, 8, 9, 10, 11
G BLOCK



3 BHK
1825 SFT
NORTH FACE
FLAT NO. 6
G BLOCK



2 BHK
1140 SFT
WEST FACE
FLAT NO. 12, 13
G BLOCK



3 BHK
1670 SFT
EAST FACE
FLAT NO. 14, 15
G BLOCK



3 BHK
1670 SFT
WEST FACE
FLAT NO. 16, 17
G BLOCK



2 BHK
1140 SFT
EAST FACE
FLAT NO. 18, 19
G BLOCK



SPECIFICATIONS



STRUCTURE
RCC



SUPER STRUCTURE
Red Burnt Brick/Aerocon blocks/Cement Bricks in CM with 9" thick outside Walls and 4 1/2" thick internal walls.



FLOORING
Vitrified Tiles in hall and dining, various sizes in Bedroom, Ceramic flooring in bath rooms, 3' height ceramic tile dadoing in wash area



KITCHEN
2' height ceramic/glazed tiles dado.



MAIN DOOR
Teak wood frame with Teak wood Shutter.



WINDOWS
UPVC



DOORS
Medium Teak Wood Frame with flush shutters.



ELECTRICAL
Concealed copper wiring in PVC conduit with Modular Switches, adequate points like fan point, T.V. Point and 15A/5A power Plugs.



PAINTING
Alltek Lappum finish for all internal walls.



WATER SUPPLY
Bore-well water from overhead tank.



TOILET
Glazed tiles dado up to 6'-00" height with white mixtures. One Toilets will have wash basin, EWC wall mixture point, shower point, Geyser point, 2nd Toilet contains one EWC, Wall mixture point and Shower point and provision for ventilator.



COMMON AREA
Granite stone in Common area and Stair Case.



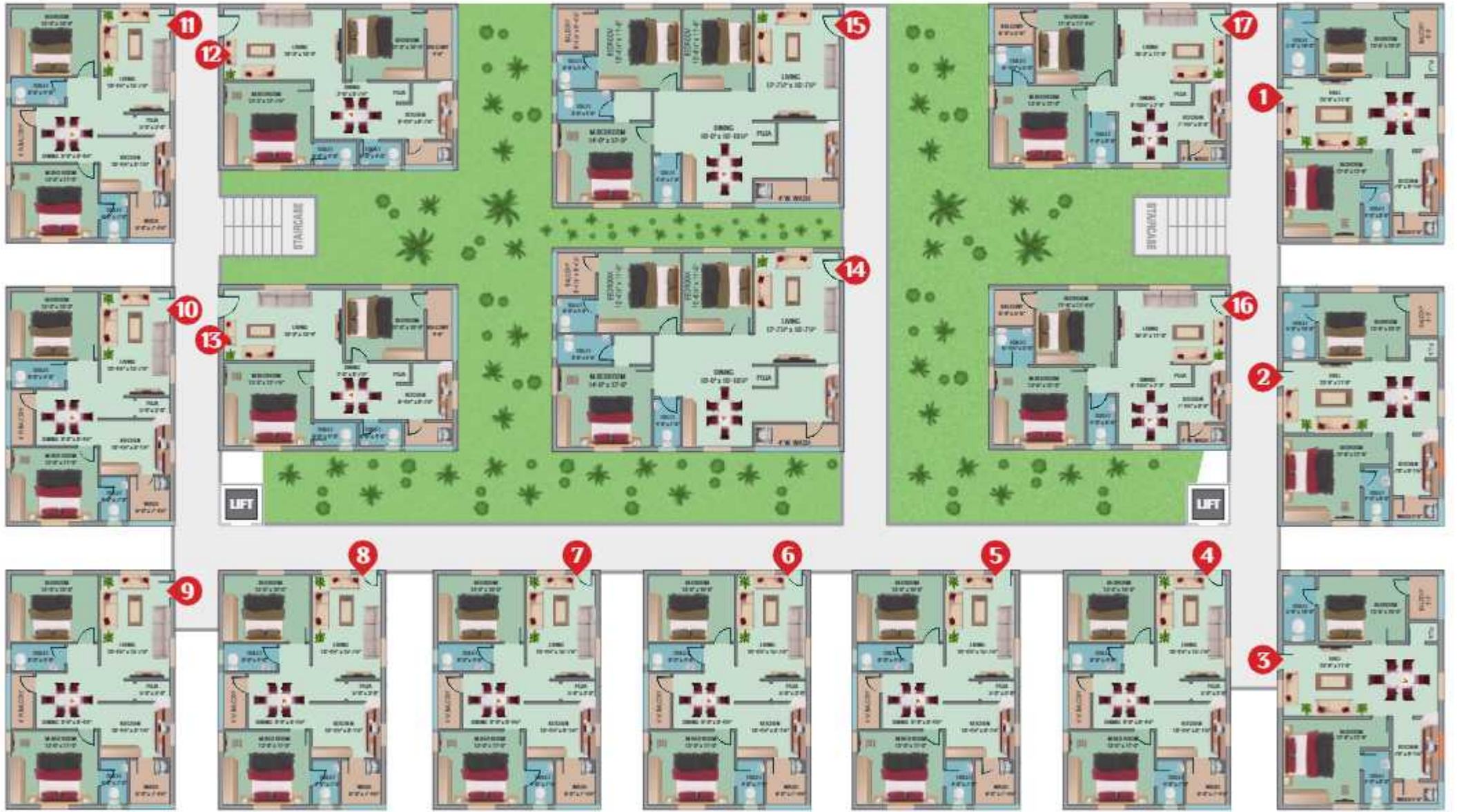
LIFT
Six passenger lift of reputed make.



BACKUP GENERATOR
Power backup for lift and common areas.

H BLOCK VIEW







2 BHK
1140 SFT
WEST FACE
FLAT NO. 1, 2, 3
H BLOCK



2 BHK
1140 SFT
NORTH FACE
FLAT NO. 4, 5, 6, 7, 8
H BLOCK



2 BHK
1140 SFT
EAST FACE
FLAT NO. 9, 10, 11
H BLOCK



2 BHK
1140 SFT
WEST FACE
FLAT NO. 12, 13
H BLOCK



3 BHK
1670 SFT
WEST FACE
FLAT NO. 14, 15
H BLOCK



2 BHK
1140 SFT
EAST FACE
FLAT NO. 16, 17
H BLOCK

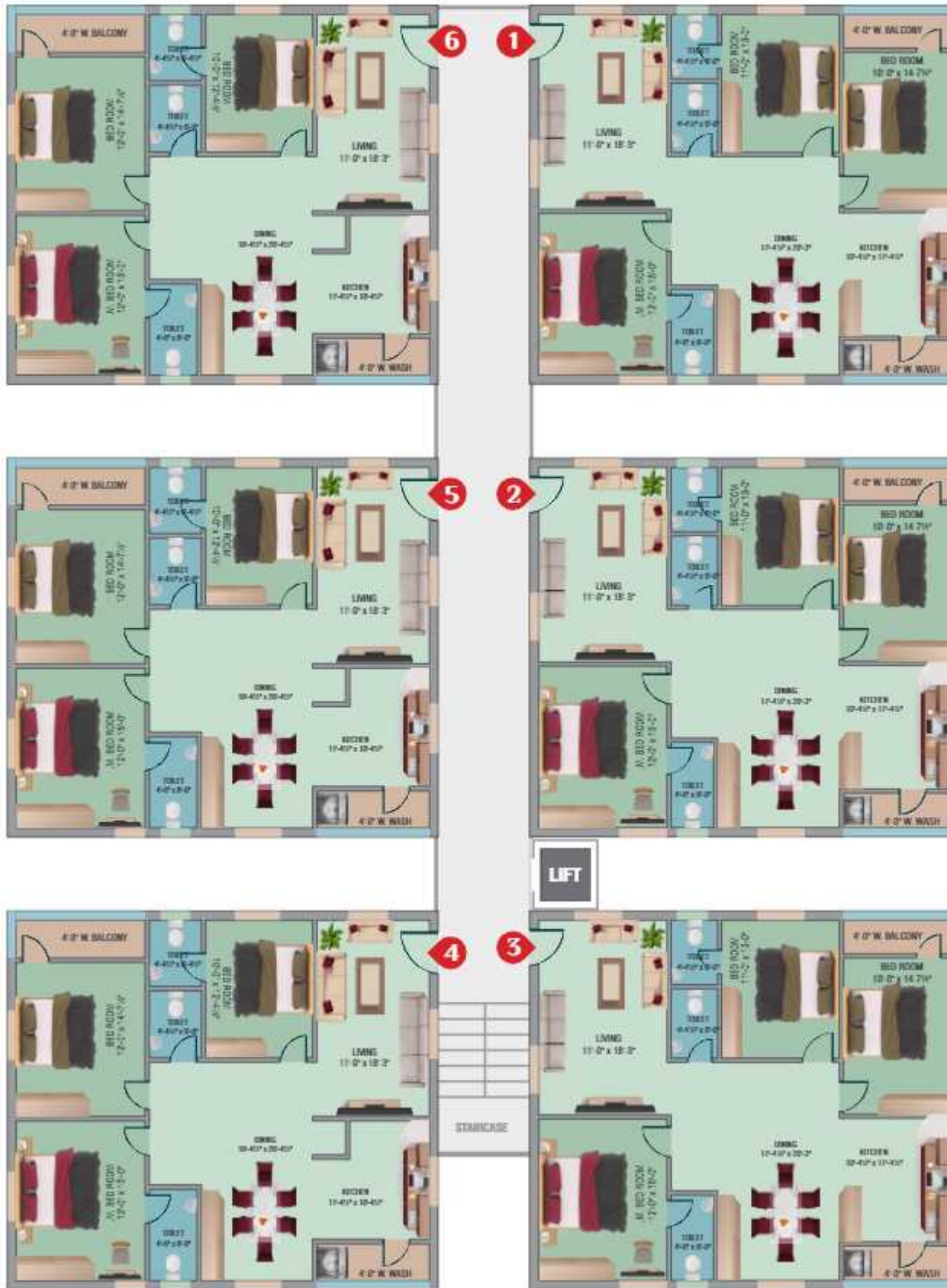


CLUB HOUSE



I BLOCK VIEW





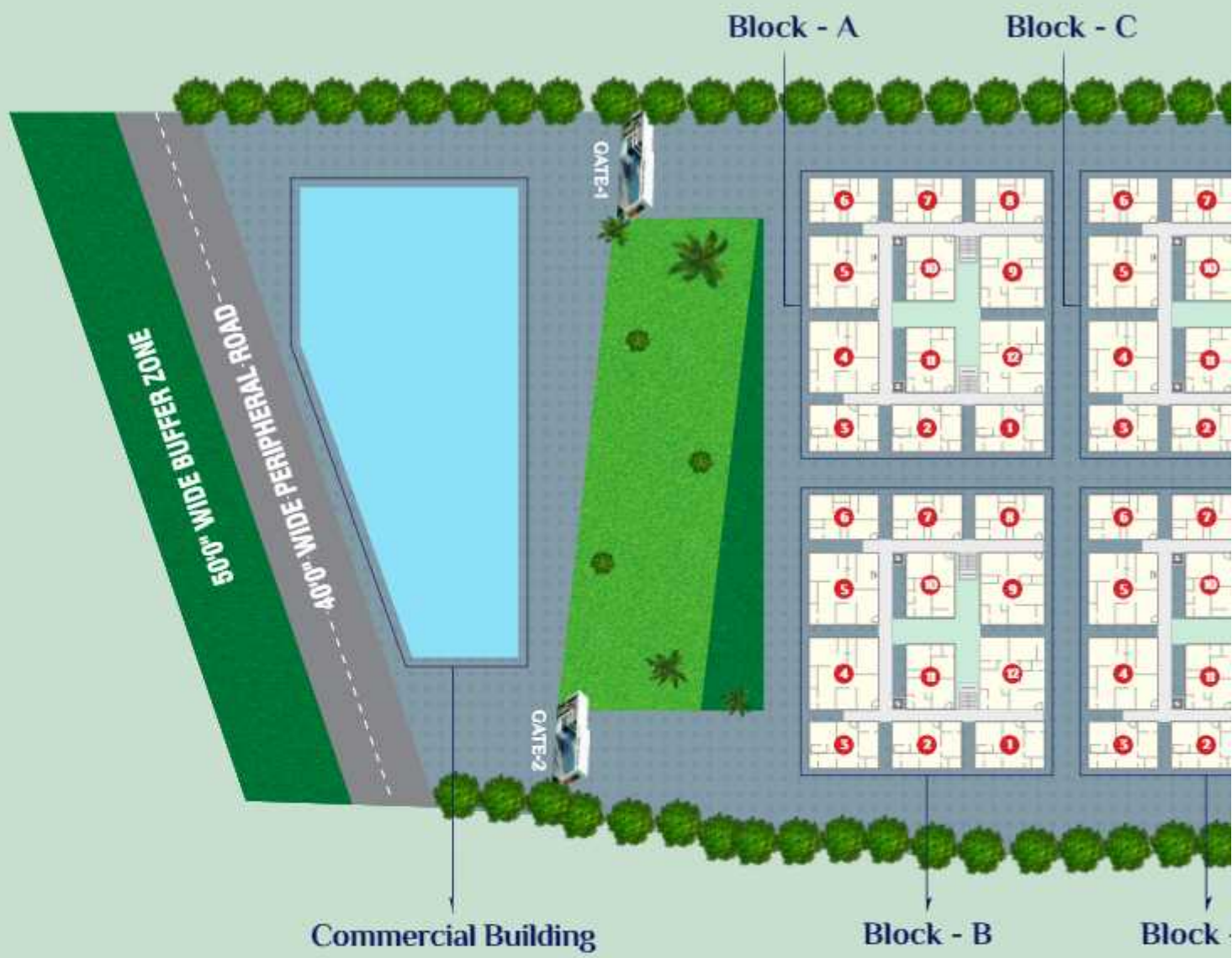


3 BHK
1760 SFT
WEST FACE
FLAT NO. 1, 2, 3
1 BLOCK



3 BHK
1760 SFT
EAST FACE
FLAT NO. 4, 5, 6
1 BLOCK





Block - E

Block - I



- D

Block - F

Block - G

Block - H

Club House

H BLOCK VIEW



I BLOCK VIEW



CLUB HOUSE



LOCATION HIGHLIGHTS

- Facing to Outer Ring Road
- 5 minutes to Wonderla
- 5 minutes to TCS
- 5 minutes to TATA Aerospace
- 10 minutes to Electronic City
- 10 minutes to Hardware Park
- 10 minutes to Textile Park
- 10 minutes to Collector Office, R.R. Dist
- 20 minutes to Rajiv Gandhi International Air Port
- 25 minutes to Pharma City

A PLUSH & PROMINENT ADDRESS

Strategically located in a future of IT & Electronic Hub at Adibatla, Parijatha Prime is facing to Outer Ring Road, The locality is well connected to the rest of the city via a strong network of roadways and highways. Though away from the maddening rush, you are still close to prestigious residential developments, high profile commercial sectors, quality health care centers and educational institutions. Shopping centers and entertainment zones are not far off. Transport medium are easy to find.

The presence of good infrastructure has transformed this locale into one of the most preferred residential locality.



LOCATION PLAN

not to scale





PARIJATHA

HOMES & DEVELOPERS PVT. LTD.

The Honest Realtors

An ISO 9001:2005 Company

Corporate Office: 1st Floor, Meenakshi House, Road No. 7
Beside Ratnadeep Supermarket, Banjara Hills, Hyderabad - 54.

Regd. Office: Flat No. 109, 1st Floor, GBS Enclave, Moti Valley,
Tirumalgherry, Secunderabad - 500015, Telangana.

Website: www.parijathahomes.com

Contact: +91 40 4546 2069 / parijathahomes45@gmail.com

 **slick architects**
Architects & Interiors

Flat No. Q3, Third Floor, Madhumalaxmi Chambers,
Moghairajpuram, Vijayawada - 520010,
Contact: +91 90526 111333

Note: This Brochure is only a conceptual presentation of the project and not a legal offering. The Builders & Promoters have right to make changes in elevation and specifications as deemed fit.